

CANADA LIFE GLOBAL MULTI-SECTOR BOND FUND

Interim Management Report of Fund Performance

For the Six-Month Period Ended September 30, 2024

This Interim Management Report of Fund Performance contains financial highlights but does not contain either the interim financial report or annual financial statements of the investment fund. You may obtain a copy of the interim financial report or annual financial statements, at no cost, by calling 1-844-730-1633, by writing to us at 255 Dufferin Ave., London, Ontario, N6A 4K1, or by visiting our website at www.canadalifeinvest.ca or the SEDAR+ website at www.sedarplus.ca.

Securityholders may also contact us using one of these methods to request a copy of the investment fund's proxy voting policies and procedures, proxy voting disclosure record or quarterly portfolio disclosure. For more information, please refer to the Fund's Simplified Prospectus and Fund Facts, which may also be obtained, at no cost, using any of the methods outlined above.

For the Fund's current net asset values per security and for more recent information on general market events, please visit our website.

A NOTE ON FORWARD-LOOKING STATEMENTS

This report may contain forward-looking statements that reflect our current expectations or forecasts of future events. Forward-looking statements include statements that are predictive in nature, depend upon or refer to future events or conditions, or include words such as "expects", "anticipates", "intends", "plans", "believes", "estimates", "preliminary", "typical" and other similar expressions. In addition, these statements may relate to future corporate actions, future financial performance of a fund or a security and their future investment strategies and prospects. Forward-looking statements are inherently subject to, among other things, risks, uncertainties and assumptions that could cause actual events, results, performance or prospects to differ materially from those expressed in, or implied by, these forward-looking statements. These risks, uncertainties and assumptions include, without limitation, general economic, political and market factors in North America and internationally, interest and foreign exchange rates, the volatility of global equity and capital markets, business competition, technological change, changes in government regulations, changes in securities laws and regulations, changes in tax laws, unexpected judicial or regulatory proceedings, catastrophic events, outbreaks of disease or pandemics (such as COVID-19), and the ability of Canada Life Investment Management Ltd. to attract or retain key employees. The foregoing list of important risks, uncertainties and assumptions is not exhaustive. Please consider these and other factors carefully and do not place undue reliance on forward-looking statements.

The forward-looking information contained in this report is current only as of the date of this report. There should not be an expectation that such information will in all circumstances be updated, supplemented or revised whether as a result of new information, changing circumstances, future events or otherwise.



™ Canada Life Mutual Funds, Canada Life Investment Management and design are trademarks of The Canada Life Assurance Company.

CANADA LIFE GLOBAL MULTI-SECTOR BOND FUND

INTERIM MANAGEMENT REPORT OF FUND PERFORMANCE | For the Period Ended September 30, 2024

Management Discussion of Fund Performance

This Management Discussion of Fund Performance presents the portfolio management team's view on the significant factors and developments that have affected the performance and outlook of Canada Life Global Multi-Sector Bond Fund (the "Fund") in the six-month period ended September 30, 2024 (the "period"). If the Fund was established during the period, "period" represents the period since inception.

In this report, "CLIML" and "the Manager" refer to Canada Life Investment Management Ltd., which is a subsidiary of The Canada Life Assurance Company ("Canada Life"). The Manager has entered into a fund administration agreement with Mackenzie Financial Corporation ("Mackenzie"), an affiliate of the Manager and Canada Life, for administrative services. In addition, net asset value ("NAV") refers to the value of the Fund as calculated for transaction purposes, on which the discussion of Fund performance is based.

Please read *A Note on Forward-Looking Statements* on the first page of this document.

Results of Operations

Investment Performance

The performance of all series in the current and previous periods is shown in the *Past Performance* section of the report. Performance will vary by series primarily because fees and expenses differ between series, or because securities of a series were not issued and outstanding for the entire reporting period. Please refer to the *Fund Formation and Series Information* section of this report for the varying management and administration fees payable by each series. The following comparison to market indices is intended to help investors understand the Fund's performance relative to the general performance of the markets. However, the Fund's mandate may be different from that of the indices shown.

During the period, the Fund's A Series securities returned 2.4% (after deducting fees and expenses paid by the series). This compares with the Bloomberg Multiverse (Hedged) Index return of 4.0%. All index and series returns are calculated on a total return basis in Canadian dollar terms. Investors cannot invest in an index without incurring fees, expenses and commissions, which are not reflected in the index returns.

In response to cooling inflation and weaker labour markets, the U.S. Federal Reserve, the European Central Bank and the Bank of England lowered interest rates during the period. The U.S. Federal Reserve reduced its federal funds rate by 50 basis points to a target range of 4.75%–5.00%. Global bond yields declined in anticipation of lower central bank rates. Meanwhile, the Bank of Japan raised its policy rate to 0.25% from zero, while indicating that it will consider additional increases depending on economic and inflation data.

The Fund underperformed the index, with a shorter duration (lower sensitivity to interest rates) in corporate bonds in the energy sector detracting from performance. Currency management also detracted from performance.

Security selection among corporate bonds in the financial and industrial sectors contributed to performance.

Over the period, the portfolio management team increased the Fund's exposure to corporate bonds, specifically shorter-dated high-yield bonds, as spreads (the difference in yield between high-yield and investment grade bonds) widened and fundamentals remained strong. The team decreased exposure to foreign government bonds, particularly in the United States, as bonds rallied and yields dropped. The Fund's cash position increased.

Net Assets

The Fund's net assets increased by 4.9% during the period to \$439.3 million. This change was composed primarily of \$13.4 million in net income (including any interest and/or dividend income) from investment performance, after deducting fees and expenses, and an increase of \$7.1 million due to net securityholder activity (including sales, redemptions and cash distributions).

Fees and Expenses

The annualized management expense ratio ("MER") for each series during the period ended September 30, 2024, was generally similar to the MER for the year ended March 31, 2024. Total expenses paid vary from period to period mainly as a result of changes in average assets in each series. The MERs for all series are presented in the *Financial Highlights* section of this report.

Recent Developments

The portfolio management team believes the market has already aggressively priced in significant interest rate cuts, which led to lower bond yields in the period. The team does not expect yields to fall further unless there is a significant macroeconomic event, like a recession. The Fund's duration was shorter than that of the index at period-end.

Effective July 17, 2024, IPC Investment Corporation and IPC Securities Corporation were added as principal distributors for the Fund, alongside Quadrus Investment Services Ltd.

Effective October 1, 2024, the manager, trustee, portfolio manager and promoter of the Fund, CLIML, amalgamated with Counsel Portfolio Services Inc., whereupon the amalgamated company, named CLIML, continued to serve as the manager, trustee, portfolio manager and promoter of the Fund. This is not a material change for the Fund.

Related Party Transactions

Management and Administration Services

For each applicable series, the Fund paid management fees and administration fees to the Manager at the annual rates specified under *Fund Formation and Series Information* in this report and as more fully described in the Simplified Prospectus. In return for the administration fees, the Manager pays all costs and expenses (other than certain specified fund costs) required to operate the Fund that are not included in management fees. See also *Management Fees*.

Other Related Party Transactions

Certain other investment funds managed by CLIML and segregated fund policies issued by Canada Life may invest in the Fund on a prospectus-exempt basis in accordance with the investment objectives of those funds. At September 30, 2024, these other investment funds and segregated funds owned 79.7% of the Fund's NAV. All related party transactions are based on the NAV per security on each transaction day. As a result of these investments, the Fund may be subject to large transaction risk as discussed in the Fund's Simplified Prospectus. CLIML manages this risk to reduce the possibility of any adverse effect on the Fund or on its investors, through such processes as requiring advance notice of large redemptions.

The Fund did not rely on an approval, positive recommendation or standing instruction from the Canada Life Funds' Independent Review Committee with respect to any related party transactions in the period.

CANADA LIFE GLOBAL MULTI-SECTOR BOND FUND

INTERIM MANAGEMENT REPORT OF FUND PERFORMANCE | For the Period Ended September 30, 2024

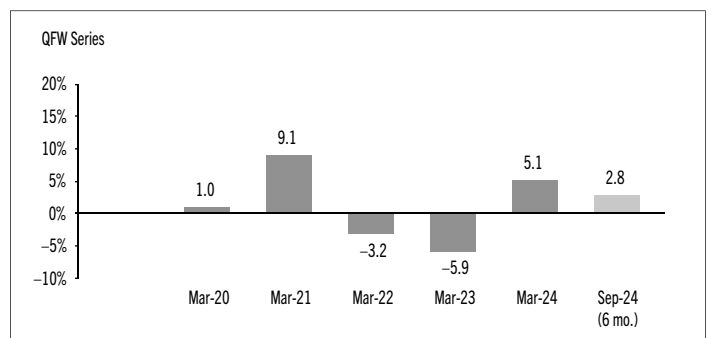
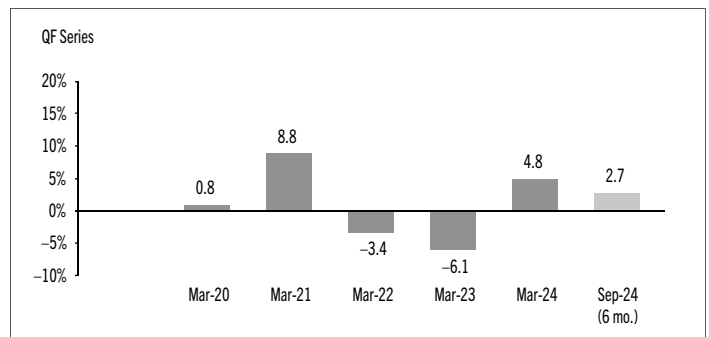
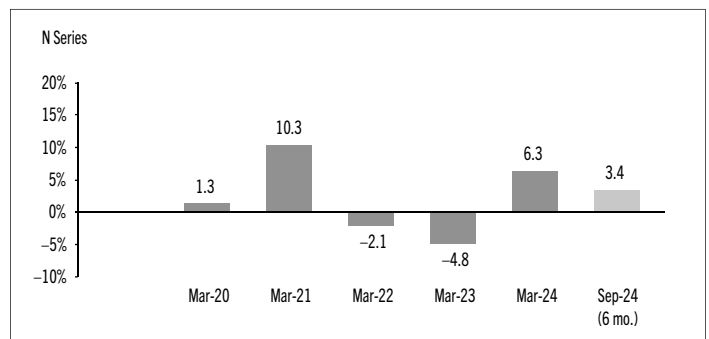
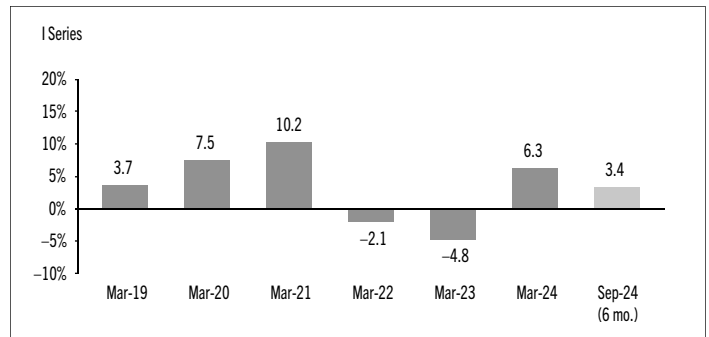
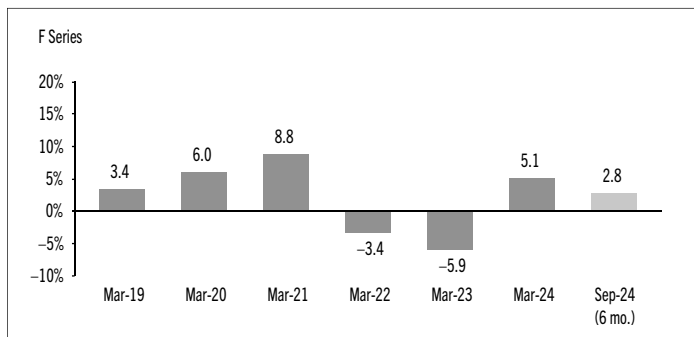
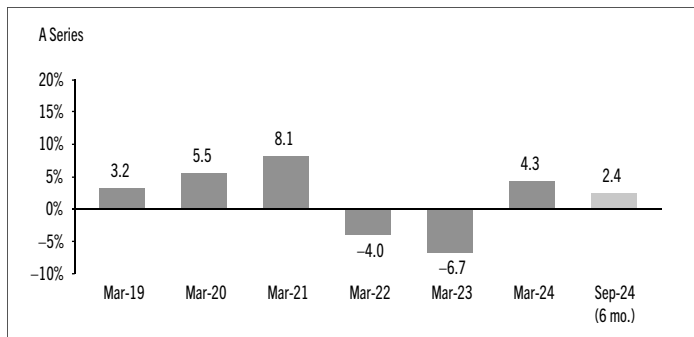
Past Performance

The Fund's performance information assumes all distributions made by the Fund in the periods presented are reinvested in additional securities of the relevant series of the Fund. The performance information does not take into account sales, redemption, distribution or other optional charges, or income taxes payable by any investor that would have reduced returns or performance. The past performance of the Fund is not necessarily an indication of how it will perform in the future.

If you hold this Fund outside of a registered plan, income and capital gains distributions paid to you increase your income for tax purposes whether paid to you in cash or reinvested in additional securities of the Fund. The amount of reinvested taxable distributions is added to the adjusted cost base of the securities that you own. This would decrease your capital gain or increase your capital loss when you later redeem from the Fund, thereby ensuring that you are not taxed on this amount again. Please consult your tax advisor regarding your personal tax situation.

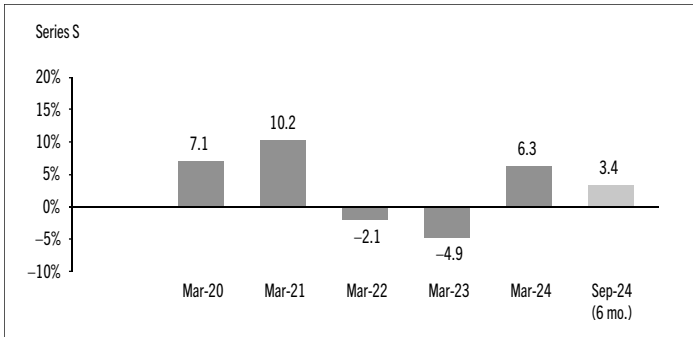
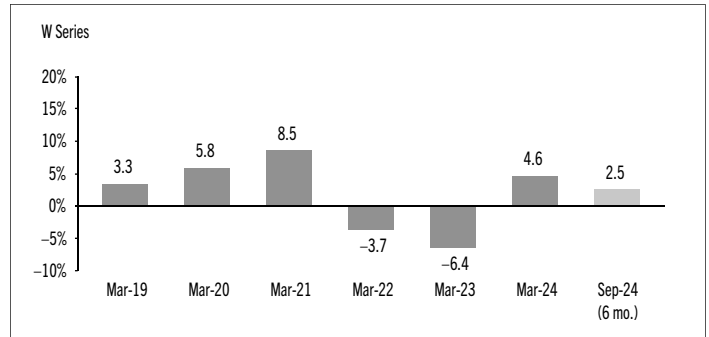
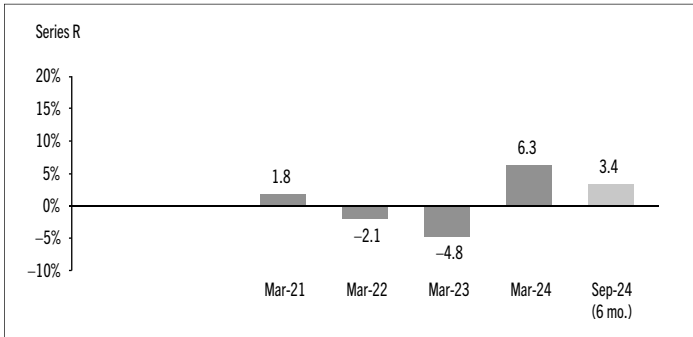
Year-by-Year Returns

The following bar charts present the performance of each series of the Fund for each of the fiscal periods shown. The charts show, in percentage terms, how much an investment made on the first day of each fiscal period, or on the series inception or reinstatement date, as applicable, would have increased or decreased by the last day of the fiscal period presented. Series inception or reinstatement dates can be found under *Fund Formation and Series Information*.



CANADA LIFE GLOBAL MULTI-SECTOR BOND FUND

INTERIM MANAGEMENT REPORT OF FUND PERFORMANCE | For the Period Ended September 30, 2024



CANADA LIFE GLOBAL MULTI-SECTOR BOND FUND

INTERIM MANAGEMENT REPORT OF FUND PERFORMANCE | For the Period Ended September 30, 2024

Summary of Investment Portfolio at September 30, 2024

PORTFOLIO ALLOCATION	% OF NAV
Bonds	89.0
Bonds	81.8
Long bond futures*	7.2
Cash and cash equivalents	6.9
Short-term investments	4.1

REGIONAL ALLOCATION	% OF NAV
United States	45.9
Mexico	8.6
United Kingdom	7.4
Cash and cash equivalents	6.9
Brazil	6.0
Canada	4.3
Cayman Islands	3.9
Egypt	3.7
Other	3.2
Israel	2.7
Panama	1.8
Colombia	1.6
Argentina	1.3
Switzerland	0.9
France	0.9
Australia	0.9

SECTOR ALLOCATION	% OF NAV
Corporate bonds	50.9
Foreign government bonds	20.1
Mortgage backed	18.0
Cash and cash equivalents	6.9
Short-term deposits	4.1

BONDS BY CREDIT RATING**	% OF NAV
AA	10.0
A	3.0
BBB	23.0
Less than BBB	35.7
Unrated	10.1

* Notional values represent 7.3% of NAV for long bond futures.

** Credit ratings and rating categories are based on ratings issued by a designated rating organization.

TOP 25 POSITIONS	% OF NAV
Issuer	
Cash and cash equivalents	14.1
Egypt Treasury Bill 5.43% 10-22-2024	4.1
Government of Mexico 7.50% 05-26-2033	2.8
Government of United Kingdom 3.75% 10-22-2053	2.5
Petroleos Mexicanos 5.35% 02-12-2028	2.3
Freddie Mac F/R 11-25-2043	2.0
Government of Brazil 10.00% 01-01-2027	2.0
Government of Mexico 8.50% 03-01-2029	1.7
New Fortress Energy Inc. 6.75% 09-15-2025	1.2
Government of Mexico 8.00% 07-31-2053	1.2
Freddie Mac F/R 06-25-2042	1.2
Government of Panama 4.50% 01-19-2063	1.1
DISH Network Corp. 3.38% 08-15-2026	1.1
Freddie Mac F/R 01-25-2034	1.1
Freddie Mac F/R 11-25-2050	1.0
Venture Global LNG Inc. 8.13% 06-01-2028	1.0
Mohegan Gaming & Entertainment 8.00% 02-01-2026	1.0
Dryden Senior Loan Fund F/R 07-15-2031	1.0
Charles Schwab Corp. F/R 06-01-2173	1.0
Magnetite CLO Ltd. F/R 10-15-2031	0.9
Neuberger Berman CLO Ltd. F/R 10-18-2030	0.9
Hawaiian Brand Intellectual Property Ltd. 11.00% 04-15-2029	0.9
UBS Group AG F/R 08-12-2033	0.9
Government of Colombia 7.00% 03-26-2031	0.9
Fannie Mae F/R 06-25-2043	0.9

Top long positions as a percentage of total net asset value	48.8
---	------

The Fund held no short positions at the end of the period.

The investments and percentages may have changed since September 30, 2024, due to the ongoing portfolio transactions of the Fund. Quarterly updates of holdings are available within 60 days of the end of each quarter except for March 31, the Fund's fiscal year-end, when they are available within 90 days. The quarterly updates are available by visiting www.canadalifeinvest.ca.

CANADA LIFE GLOBAL MULTI-SECTOR BOND FUND

INTERIM MANAGEMENT REPORT OF FUND PERFORMANCE | For the Period Ended September 30, 2024

Financial Highlights

The following tables show selected key financial information about the Fund and are intended to help you understand the Fund's financial performance for each of the fiscal periods presented below. If during the period a fund or series was established or reinstated, "period" represents the period from inception or reinstatement to the end of that fiscal period. Series inception or reinstatement dates can be found under *Fund Formation and Series Information*.

THE FUND'S NET ASSETS PER SECURITY (\$)¹

	Sep. 30 2024	Mar. 31 2024	Mar. 31 2023	Mar. 31 2022	Mar. 31 2021	Mar. 31 2020
A Series						
Net assets, beginning of period	9.33	9.22	10.13	10.94	10.32	10.28
Increase (decrease) from operations:						
Total revenue	0.32	0.58	0.42	0.40	0.41	0.35
Total expenses	(0.09)	(0.17)	(0.18)	(0.20)	(0.21)	(0.20)
Realized gains (losses) for the period	0.02	(0.69)	(0.80)	(0.20)	(0.14)	0.40
Unrealized gains (losses) for the period	(0.04)	0.68	(0.06)	(0.50)	0.22	(0.42)
Total increase (decrease) from operations²	0.21	0.40	(0.62)	(0.50)	0.28	0.13
Distributions:						
From net investment income (excluding Canadian dividends)	(0.24)	(0.29)	(0.23)	(0.21)	(0.14)	(0.26)
From Canadian dividends	-	-	-	-	-	-
From capital gains	-	-	-	(0.19)	(0.08)	(0.26)
Return of capital	-	-	-	-	-	-
Total annual distributions³	(0.24)	(0.29)	(0.23)	(0.40)	(0.22)	(0.52)
Net assets, end of period	9.30	9.33	9.22	10.13	10.94	10.32
F Series						
Net assets, beginning of period	9.34	9.22	10.12	10.94	10.31	10.29
Increase (decrease) from operations:						
Total revenue	0.32	0.58	0.41	0.39	0.48	0.35
Total expenses	(0.05)	(0.10)	(0.10)	(0.13)	(0.14)	(0.14)
Realized gains (losses) for the period	0.04	(0.69)	(0.46)	(0.42)	(0.02)	0.30
Unrealized gains (losses) for the period	(0.04)	0.68	(0.06)	(0.49)	0.25	(0.42)
Total increase (decrease) from operations²	0.27	0.47	(0.21)	(0.65)	0.57	0.09
Distributions:						
From net investment income (excluding Canadian dividends)	(0.27)	(0.35)	(0.30)	(0.28)	(0.20)	(0.32)
From Canadian dividends	-	-	-	-	-	-
From capital gains	-	-	-	(0.19)	(0.08)	(0.27)
Return of capital	-	-	-	-	-	-
Total annual distributions³	(0.27)	(0.35)	(0.30)	(0.47)	(0.28)	(0.59)
Net assets, end of period	9.32	9.34	9.22	10.12	10.94	10.31

I Series	Sep. 30 2024	Mar. 31 2024	Mar. 31 2023	Mar. 31 2022	Mar. 31 2021	Mar. 31 2020
Net assets, beginning of period	9.38	9.24	10.14	10.95	10.30	10.30
Increase (decrease) from operations:						
Total revenue	0.32	0.58	0.42	0.39	0.51	0.39
Total expenses	-	-	-	-	-	(0.01)
Realized gains (losses) for the period	0.02	(0.69)	(0.83)	(0.26)	0.03	0.98
Unrealized gains (losses) for the period	(0.04)	0.69	(0.06)	(0.50)	0.27	(0.48)
Total increase (decrease) from operations²	0.30	0.58	(0.47)	(0.37)	0.81	0.88
Distributions:						
From net investment income (excluding Canadian dividends)	(0.32)	(0.43)	(0.41)	(0.40)	(0.32)	(0.42)
From Canadian dividends	-	-	-	-	-	-
From capital gains	-	-	-	(0.20)	(0.08)	(0.33)
Return of capital	-	-	-	-	-	-
Total annual distributions³	(0.32)	(0.43)	(0.41)	(0.60)	(0.40)	(0.75)
Net assets, end of period	9.36	9.38	9.24	10.14	10.95	10.30
N Series						
Net assets, beginning of period	8.82	8.68	9.53	10.29	9.68	10.00
Increase (decrease) from operations:						
Total revenue	0.30	0.54	0.40	0.37	0.37	0.13
Total expenses	-	-	-	-	-	-
Realized gains (losses) for the period	0.02	(0.59)	(0.84)	(0.36)	(0.17)	0.03
Unrealized gains (losses) for the period	(0.04)	0.64	(0.05)	(0.46)	0.20	(0.15)
Total increase (decrease) from operations²	0.28	0.59	(0.49)	(0.45)	0.40	0.01
Distributions:						
From net investment income (excluding Canadian dividends)	(0.30)	(0.40)	(0.38)	(0.37)	(0.30)	(0.19)
From Canadian dividends	-	-	-	-	-	-
From capital gains	-	-	-	(0.19)	(0.08)	(0.26)
Return of capital	-	-	-	-	-	-
Total annual distributions³	(0.30)	(0.40)	(0.38)	(0.56)	(0.38)	(0.45)
Net assets, end of period	8.80	8.82	8.68	9.53	10.29	9.68

(1) These calculations are prescribed by securities regulations and are not intended to be a reconciliation between opening and closing net assets per security. This information is derived from the Fund's unaudited interim financial statements and audited annual financial statements. The net assets per security presented in the financial statements may differ from the net asset value per security calculated for fund pricing purposes. An explanation of these differences, if any, can be found in the *Notes to Financial Statements*.

(2) Net assets and distributions are based on the actual number of securities outstanding at the relevant time. The increase/decrease from operations is based on the weighted average number of securities outstanding over the fiscal period.

(3) Distributions were paid in cash/reinvested in additional securities of the Fund, or both.

CANADA LIFE GLOBAL MULTI-SECTOR BOND FUND

INTERIM MANAGEMENT REPORT OF FUND PERFORMANCE | For the Period Ended September 30, 2024

THE FUND'S NET ASSETS PER SECURITY (\$)¹ (cont'd)

	Sep. 30 2024	Mar. 31 2024	Mar. 31 2023	Mar. 31 2022	Mar. 31 2021	Mar. 31 2020
QF Series						
Net assets, beginning of period	8.74	8.64	9.49	10.26	9.67	10.00
Increase (decrease) from operations:						
Total revenue	0.30	0.54	0.39	0.37	0.37	0.12
Total expenses	(0.06)	(0.11)	(0.11)	(0.13)	(0.14)	(0.06)
Realized gains (losses) for the period	0.02	(0.67)	(0.93)	(0.21)	(0.11)	(0.14)
Unrealized gains (losses) for the period	(0.04)	0.64	(0.05)	(0.47)	0.20	(0.15)
Total increase (decrease) from operations²	0.22	0.40	(0.70)	(0.44)	0.32	(0.23)
Distributions:						
From net investment income (excluding Canadian dividends)	(0.25)	(0.31)	(0.27)	(0.25)	(0.18)	(0.16)
From Canadian dividends	–	–	–	–	–	–
From capital gains	–	–	–	(0.19)	(0.08)	(0.25)
Return of capital	–	–	–	–	–	–
Total annual distributions³	(0.25)	(0.31)	(0.27)	(0.44)	(0.26)	(0.41)
Net assets, end of period	8.72	8.74	8.64	9.49	10.26	9.67
QFW Series						
Net assets, beginning of period	8.78	8.66	9.51	10.27	9.67	10.00
Increase (decrease) from operations:						
Total revenue	0.30	0.54	0.39	0.36	0.30	0.13
Total expenses	(0.05)	(0.10)	(0.10)	(0.12)	(0.12)	(0.03)
Realized gains (losses) for the period	0.04	(0.66)	(0.83)	(0.43)	(0.33)	0.16
Unrealized gains (losses) for the period	(0.04)	0.64	(0.05)	(0.46)	0.16	(0.16)
Total increase (decrease) from operations²	0.25	0.42	(0.59)	(0.65)	0.01	0.10
Distributions:						
From net investment income (excluding Canadian dividends)	(0.25)	(0.32)	(0.28)	(0.27)	(0.21)	(0.17)
From Canadian dividends	–	–	–	–	–	–
From capital gains	–	–	–	(0.18)	(0.07)	(0.26)
Return of capital	–	–	–	–	–	–
Total annual distributions³	(0.25)	(0.32)	(0.28)	(0.45)	(0.28)	(0.43)
Net assets, end of period	8.75	8.78	8.66	9.51	10.27	9.67
Series R						
Net assets, beginning of period	8.49	8.36	9.18	9.90	10.00	n/a
Increase (decrease) from operations:						
Total revenue	0.29	0.52	0.38	0.36	0.10	n/a
Total expenses	–	–	–	–	–	n/a
Realized gains (losses) for the period	0.02	(0.61)	(0.76)	(0.15)	(0.33)	n/a
Unrealized gains (losses) for the period	(0.04)	0.62	(0.05)	(0.46)	0.05	n/a
Total increase (decrease) from operations²	0.27	0.53	(0.43)	(0.25)	(0.18)	n/a
Distributions:						
From net investment income (excluding Canadian dividends)	(0.29)	(0.39)	(0.37)	(0.36)	(0.20)	n/a
From Canadian dividends	–	–	–	–	–	n/a
From capital gains	–	–	–	(0.18)	(0.08)	n/a
Return of capital	–	–	–	–	–	n/a
Total annual distributions³	(0.29)	(0.39)	(0.37)	(0.54)	(0.28)	n/a
Net assets, end of period	8.47	8.49	8.36	9.18	9.90	n/a

Series S	Sep. 30 2024	Mar. 31 2024	Mar. 31 2023	Mar. 31 2022	Mar. 31 2021	Mar. 31 2020
Net assets, beginning of period	9.23	9.09	9.98	10.77	10.12	10.00
Increase (decrease) from operations:						
Total revenue	0.32	0.57	0.41	0.39	0.38	0.27
Total expenses	–	–	–	–	–	(0.01)
Realized gains (losses) for the period	0.02	(0.65)	(0.77)	(0.27)	(0.14)	0.16
Unrealized gains (losses) for the period	(0.04)	0.67	(0.06)	(0.49)	0.20	(0.33)
Total increase (decrease) from operations²	0.30	0.59	(0.42)	(0.37)	0.44	0.09
Distributions:						
From net investment income (excluding Canadian dividends)	(0.32)	(0.42)	(0.40)	(0.39)	(0.30)	(0.34)
From Canadian dividends	–	–	–	–	–	–
From capital gains	–	–	–	(0.20)	(0.09)	(0.24)
Return of capital	–	–	–	–	–	–
Total annual distributions³	(0.32)	(0.42)	(0.40)	(0.59)	(0.39)	(0.58)
Net assets, end of period	9.21	9.23	9.09	9.98	10.77	10.12
W Series						
Net assets, beginning of period	9.35	9.24	10.15	10.95	10.32	10.28
Increase (decrease) from operations:						
Total revenue	0.32	0.58	0.42	0.39	0.44	0.35
Total expenses	(0.08)	(0.15)	(0.15)	(0.18)	(0.18)	(0.17)
Realized gains (losses) for the period	–	(0.65)	(0.85)	(0.26)	(0.09)	0.52
Unrealized gains (losses) for the period	(0.04)	0.68	(0.06)	(0.50)	0.23	(0.42)
Total increase (decrease) from operations²	0.20	0.46	(0.64)	(0.55)	0.40	0.28
Distributions:						
From net investment income (excluding Canadian dividends)	(0.25)	(0.31)	(0.25)	(0.23)	(0.17)	(0.29)
From Canadian dividends	–	–	–	–	–	–
From capital gains	–	–	–	(0.19)	(0.07)	(0.27)
Return of capital	–	–	–	–	–	–
Total annual distributions³	(0.25)	(0.31)	(0.25)	(0.42)	(0.24)	(0.56)
Net assets, end of period	9.33	9.35	9.24	10.15	10.95	10.32

CANADA LIFE GLOBAL MULTI-SECTOR BOND FUND

INTERIM MANAGEMENT REPORT OF FUND PERFORMANCE | For the Period Ended September 30, 2024

RATIOS AND SUPPLEMENTAL DATA

	Sep. 30 2024	Mar. 31 2024	Mar. 31 2023	Mar. 31 2022	Mar. 31 2021	Mar. 31 2020
A Series						
Total net asset value (\$000) ¹	16,317	16,998	16,962	16,019	13,165	2,424
Securities outstanding (000) ¹	1,754	1,824	1,840	1,582	1,203	235
Management expense ratio (%) ²	1.92	1.93	1.93	1.93	1.94	1.91
Management expense ratio before waivers or absorptions (%) ²	1.92	1.93	1.93	1.93	1.94	1.91
Trading expense ratio (%) ³	–	–	–	0.01	–	0.04
Portfolio turnover rate (%) ⁴	35.91	88.32	133.62	81.88	87.34	317.69
Net asset value per security (\$)	9.30	9.32	9.22	10.13	10.94	10.32
F Series						
Total net asset value (\$000) ¹	9,299	6,791	5,907	2,640	1,168	361
Securities outstanding (000) ¹	998	728	641	261	107	35
Management expense ratio (%) ²	1.09	1.10	1.13	1.32	1.34	1.36
Management expense ratio before waivers or absorptions (%) ²	1.09	1.10	1.13	1.32	1.34	1.36
Trading expense ratio (%) ³	–	–	–	0.01	–	0.04
Portfolio turnover rate (%) ⁴	35.91	88.32	133.62	81.88	87.34	317.69
Net asset value per security (\$)	9.32	9.33	9.22	10.12	10.94	10.31
I Series						
Total net asset value (\$000) ¹	19,630	19,371	18,201	19,996	12,928	5,777
Securities outstanding (000) ¹	2,098	2,067	1,970	1,971	1,180	561
Management expense ratio (%) ²	–	0.01	–	0.01	0.01	0.02
Management expense ratio before waivers or absorptions (%) ²	–	0.01	–	0.01	0.01	0.02
Trading expense ratio (%) ³	–	–	–	0.01	–	0.04
Portfolio turnover rate (%) ⁴	35.91	88.32	133.62	81.88	87.34	317.69
Net asset value per security (\$)	9.36	9.37	9.24	10.14	10.95	10.30
N Series						
Total net asset value (\$000) ¹	24,719	24,756	14,827	18,839	9,804	1,091
Securities outstanding (000) ¹	2,811	2,811	1,708	1,976	953	113
Management expense ratio (%) ²	–	0.01	–	–	0.01	0.01
Management expense ratio before waivers or absorptions (%) ²	–	0.01	–	–	0.01	0.01
Trading expense ratio (%) ³	–	–	–	0.01	–	0.04
Portfolio turnover rate (%) ⁴	35.91	88.32	133.62	81.88	87.34	317.69
Net asset value per security (\$)	8.79	8.81	8.68	9.53	10.29	9.68
QF Series						
Total net asset value (\$000) ¹	3,177	3,389	3,938	5,757	3,511	308
Securities outstanding (000) ¹	364	388	456	606	342	32
Management expense ratio (%) ²	1.39	1.38	1.37	1.36	1.37	1.38
Management expense ratio before waivers or absorptions (%) ²	1.39	1.38	1.37	1.36	1.37	1.38
Trading expense ratio (%) ³	–	–	–	0.01	–	0.04
Portfolio turnover rate (%) ⁴	35.91	88.32	133.62	81.88	87.34	317.69
Net asset value per security (\$)	8.72	8.74	8.64	9.49	10.26	9.67

	Sep. 30 2024	Mar. 31 2024	Mar. 31 2023	Mar. 31 2022	Mar. 31 2021	Mar. 31 2020
QFW Series						
Total net asset value (\$000) ¹	4,508	3,746	3,979	4,440	1,397	1
Securities outstanding (000) ¹	515	427	459	467	136	–
Management expense ratio (%) ²	1.13	1.13	1.13	1.14	1.11	1.06
Management expense ratio before waivers or absorptions (%) ²	1.13	1.13	1.13	1.14	1.11	1.06
Trading expense ratio (%) ³	–	–	–	0.01	–	0.04
Portfolio turnover rate (%) ⁴	35.91	88.32	133.62	81.88	87.34	317.69
Net asset value per security (\$)	8.75	8.77	8.66	9.51	10.27	9.67
Series R						
Total net asset value (\$000) ¹	65,336	66,885	50,441	55,236	49,340	n/a
Securities outstanding (000) ¹	7,719	7,890	6,036	6,019	4,982	n/a
Management expense ratio (%) ²	–	0.01	–	–	–	n/a
Management expense ratio before waivers or absorptions (%) ²	–	0.01	–	–	–	n/a
Trading expense ratio (%) ³	–	–	–	0.01	–	n/a
Portfolio turnover rate (%) ⁴	35.91	88.32	133.62	81.88	87.34	n/a
Net asset value per security (\$)	8.46	8.48	8.36	9.18	9.90	n/a
Series S						
Total net asset value (\$000) ¹	284,979	265,483	215,265	194,095	123,745	14,875
Securities outstanding (000) ¹	30,956	28,795	23,684	19,449	11,488	1,469
Management expense ratio (%) ²	0.03	0.03	0.02	0.03	0.03	0.04
Management expense ratio before waivers or absorptions (%) ²	0.03	0.03	0.02	0.03	0.03	0.04
Trading expense ratio (%) ³	–	–	–	0.01	–	0.04
Portfolio turnover rate (%) ⁴	35.91	88.32	133.62	81.88	87.34	317.69
Net asset value per security (\$)	9.21	9.22	9.09	9.98	10.77	10.12

- (1) This information is provided as at the end of the fiscal period shown.
- (2) Management expense ratio ("MER") is based on total expenses, excluding commissions and other portfolio transaction costs, income taxes and withholding taxes, for the stated period and is expressed as an annualized percentage of daily average net assets during the period, except as noted. In the period a series is established, the MER is annualized from the date of inception to the end of the period. Where the Fund directly invests in securities of another fund (including exchange-traded funds or "ETFs"), the MERs presented for the Fund include the portion of MERs of the other fund(s) attributable to this investment. Any income distributions received from ETFs managed by affiliates of the Manager, with the intention of offsetting fees paid within those ETFs but which are not considered to be duplicative fees under regulatory requirements, are treated as waived expenses for MER purposes. The Manager may waive or absorb operating expenses at its discretion and stop waiving or absorbing such expenses at any time without notice.
- (3) The trading expense ratio ("TER") represents total commissions and other portfolio transaction costs incurred as an annualized percentage of daily average net assets during the period. Where the Fund invests in securities of another fund (including ETFs), the TERs presented for the Fund include the portion of TERs of the other fund(s) attributable to this investment.
- (4) The Fund's portfolio turnover rate indicates how actively the Fund's portfolio advisor manages its portfolio investments. A portfolio turnover rate of 100% is equivalent to the Fund buying and selling all of the securities in its portfolio once in the course of the period. The higher the Fund's portfolio turnover rate in a period, the greater the trading costs payable by the Fund in the period, and the greater the chance of an investor receiving taxable capital gains in the year. There is not necessarily a relationship between a high turnover rate and the performance of a fund. The portfolio turnover rate is not provided when the Fund is less than one year old. The value of any trades to realign the Fund's portfolio after a fund merger, if any, is excluded from the portfolio turnover rate.

CANADA LIFE GLOBAL MULTI-SECTOR BOND FUND

INTERIM MANAGEMENT REPORT OF FUND PERFORMANCE | For the Period Ended September 30, 2024

RATIOS AND SUPPLEMENTAL DATA (cont'd)

W Series	Sep. 30 2024	Mar. 31 2024	Mar. 31 2023	Mar. 31 2022	Mar. 31 2021	Mar. 31 2020
Total net asset value (\$000) ¹	11,340	10,952	8,867	9,671	7,419	1,931
Securities outstanding (000) ¹	1,216	1,172	959	953	677	187
Management expense ratio (%) ²	1.65	1.65	1.65	1.65	1.64	1.61
Management expense ratio before waivers or absorptions (%) ²	1.65	1.65	1.65	1.65	1.64	1.61
Trading expense ratio (%) ³	–	–	–	0.01	–	0.04
Portfolio turnover rate (%) ⁴	35.91	88.32	133.62	81.88	87.34	317.69
Net asset value per security (\$)	9.33	9.34	9.24	10.15	10.95	10.32

Management Fees

The management fee for each applicable series is calculated and accrued daily as a percentage of its NAV. The Fund's management fees were used by the Manager to pay for the costs of managing the investment portfolio of the Fund and/or the underlying fund(s), as applicable, including providing investment analysis and recommendations, making investment decisions and making brokerage arrangements for the purchase and sale of the investment portfolio.

The Manager is responsible for paying certain administrative costs and all sales commissions, trailing commissions and any other compensation (collectively, "distribution-related payments") to registered dealers whose clients invest in the Fund. As principal distributors for the Fund, Quadrus Investment Services Ltd. ("Quadrus"), IPC Investment Corporation and IPC Securities Corporation (collectively, the "Principal Distributors," individually, a "Principal Distributor"), each an affiliate of the Manager, are paid trailing commissions out of the management fees.

The Manager used approximately 38% of the total management fee revenues received from all Canada Life Mutual Funds during the period to fund distribution-related payments to Principal Distributors and authorized dealers. In comparison, such distribution-related payments for the Fund represented on average 23% of the management fees paid by all applicable series of the Fund during the period. The actual percentage for each series may be higher or lower than the average depending on the level of trailing commissions and sales commissions paid for that series.

CANADA LIFE GLOBAL MULTI-SECTOR BOND FUND

INTERIM MANAGEMENT REPORT OF FUND PERFORMANCE | For the Period Ended September 30, 2024

Fund Formation and Series Information

The Fund may have undergone a number of changes, such as a reorganization or a change in manager, mandate or name. A history of the major changes affecting the Fund in the last 10 years can be found in the Fund's Simplified Prospectus.

Date of Formation: October 12, 2018

The Fund may issue an unlimited number of securities of each series. The number of issued and outstanding securities of each series is disclosed under *Financial Highlights*.

A Series securities are offered to investors investing a minimum of \$500.

F Series securities are offered to investors investing a minimum of \$500, who are enrolled in a fee-for-service or wrap program sponsored by a Principal Distributor and who are subject to an asset-based fee.

I Series securities are offered to investors investing a minimum of \$25,000, who are participating in the Canada Life Constellation Managed Portfolios Program, and who have entered into an I Series Account Agreement with CLIML and Quadrus which specifies the fees applicable to this account.

N Series securities are offered to investors investing a minimum of \$500, who have eligible minimum total holdings of \$500,000, and who have entered into an N Series Account Agreement with CLIML and a Principal Distributor.

QF Series securities are offered to retail investors investing a minimum of \$500. Investors are required to negotiate their advisor service fee, which cannot exceed 1.25%, with their advisor.

QFW Series securities are offered to high net worth investors investing a minimum of \$500 who have eligible minimum total holdings of \$500,000. Investors are required to negotiate their advisor service fee, which cannot exceed 1.25%, with their advisor.

Series R securities are offered only to other funds managed by CLIML on a non-prospectus basis in connection with fund-of-fund arrangements.

Series S securities are offered to The Canada Life Assurance Company and certain other mutual funds, but may be sold to other investors as determined by CLIML.

W Series securities are offered to investors investing a minimum of \$500 who have eligible minimum total holdings of \$500,000.

An investor in the Fund may choose among different purchase options that are available under each series. These purchase options are a sales charge purchase option and a no-load purchase option. The charges under the sales charge purchase option are negotiated by investors with their dealers. Not all purchase options are available under each series of the Fund, and the charges for each purchase option may vary among the different series. For further details on these purchase options, please refer to the Fund's Simplified Prospectus and Fund Facts.

Series	Inception/ Reinstatement Date	Management Fee	Administration Fee
A Series	December 18, 2018	1.55%	0.20%
F Series	December 18, 2018	0.85%	0.15%
I Series	December 18, 2018	— ⁽¹⁾	— ⁽¹⁾
N Series	October 28, 2019	— ⁽¹⁾	— ⁽¹⁾
QF Series	October 28, 2019	1.05%	0.20%
QFW Series	October 28, 2019	0.85%	0.15%
Series R	September 9, 2020	n/a	n/a
Series S	May 21, 2019	— ⁽²⁾	0.02%
W Series	December 18, 2018	1.35%	0.15%

(1) This fee is negotiable and payable directly to CLIML by investors in this series through redemptions of their securities.

(2) This fee is negotiable and payable directly to CLIML by investors in this series.