

CANADA LIFE GLOBAL CORE PLUS BOND FUND

(Formerly Canada Life Pathways Global Core Plus Bond Fund)

Annual Management Report of Fund Performance

For the Year Ended March 31, 2024

This Annual Management Report of Fund Performance contains financial highlights but does not contain the complete annual financial statements of the investment fund. You may obtain a copy of the annual financial statements, at no cost, by calling 1-844-730-1633, by writing to us at 255 Dufferin Ave., London, Ontario, N6A 4K1, or by visiting our website at www.canadalifeinvest.ca or the SEDAR+ website at www.sedarplus.ca.

Securityholders may also contact us using one of these methods to request a copy of the investment fund's interim financial report, proxy voting policies and procedures, proxy voting disclosure record or quarterly portfolio disclosure. For more information, please refer to the Fund's Simplified Prospectus and Fund Facts, which may also be obtained, at no cost, using any of the methods outlined above.

For the Fund's current net asset values per security and for more recent information on general market events, please visit our website.

A NOTE ON FORWARD-LOOKING STATEMENTS

This report may contain forward-looking statements that reflect our current expectations or forecasts of future events. Forward-looking statements include statements that are predictive in nature, depend upon or refer to future events or conditions, or include words such as "expects", "anticipates", "intends", "plans", "believes", "estimates", "preliminary", "typical" and other similar expressions. In addition, these statements may relate to future corporate actions, future financial performance of a fund or a security and their future investment strategies and prospects. Forward-looking statements are inherently subject to, among other things, risks, uncertainties and assumptions that could cause actual events, results, performance or prospects to differ materially from those expressed in, or implied by, these forward-looking statements. These risks, uncertainties and assumptions include, without limitation, general economic, political and market factors in North America and internationally, interest and foreign exchange rates, the volatility of global equity and capital markets, business competition, technological change, changes in government regulations, changes in securities laws and regulations, changes in tax laws, unexpected judicial or regulatory proceedings, catastrophic events, outbreaks of disease or pandemics (such as COVID-19), and the ability of Canada Life Investment Management Ltd. to attract or retain key employees. The foregoing list of important risks, uncertainties and assumptions is not exhaustive. Please consider these and other factors carefully and do not place undue reliance on forward-looking statements.

The forward-looking information contained in this report is current only as of the date of this report. There should not be an expectation that such information will in all circumstances be updated, supplemented or revised whether as a result of new information, changing circumstances, future events or otherwise.

CANADA LIFE GLOBAL CORE PLUS BOND FUND

(Formerly Canada Life Pathways Global Core Plus Bond Fund)

ANNUAL MANAGEMENT REPORT OF FUND PERFORMANCE | For the Year Ended March 31, 2024

Management Discussion of Fund Performance

This Management Discussion of Fund Performance presents the portfolio management team's view on the significant factors and developments that have affected the performance and outlook of Canada Life Global Core Plus Bond Fund (the "Fund") in the financial year ended March 31, 2024 (the "period"). If the Fund was established during the period, "period" represents the period since inception.

In this report, "CLIML" and "the Manager" refer to Canada Life Investment Management Ltd., which is wholly owned by The Canada Life Assurance Company ("Canada Life"). The Manager has entered into a fund administration agreement with Mackenzie Financial Corporation ("Mackenzie"), an affiliate of the Manager and Canada Life, for administrative services. In addition, net asset value ("NAV") refers to the value of the Fund as calculated for transaction purposes, on which the discussion of Fund performance is based.

Please read *A Note on Forward-Looking Statements* on the first page of this document.

Investment Objective and Strategies

The Fund seeks income and long-term capital growth by investing primarily in fixed income securities issued by companies or governments of any size, anywhere in the world. The Fund allocates assets across credit quality, structures, sectors, currencies and countries. The Fund may invest up to 25% of its assets in bonds rated below "BBB-" and may invest in unrated debt instruments.

Risk

The risks of the Fund remain as discussed in the Fund's Simplified Prospectus.

The Fund is suitable for short- to medium-term investors looking for a global fixed income fund to hold as part of their portfolio, who can handle the volatility of bond markets and who have a low tolerance for risk.

Results of Operations

Investment Performance

The performance of all series in the current and previous periods is shown in the *Past Performance* section of the report. Performance will vary by series primarily because fees and expenses differ between series, or because securities of a series were not issued and outstanding for the entire reporting period. Please refer to the *Fund Formation and Series Information* section of this report for the varying management and administration fees payable by each series. The following comparison to market indices is intended to help investors understand the Fund's performance relative to the general performance of the markets. However, the Fund's mandate may be different from that of the indices shown.

During the period, the Fund's A Series securities returned 1.1% (after deducting fees and expenses paid by the series). This compares with the ICE BofA Global Broad Market (Hedged) Index return of 2.5%. All index and series returns are calculated on a total return basis in Canadian dollar terms. Investors cannot invest in an index without incurring fees, expenses and commissions, which are not reflected in the index returns.

The U.S. Federal Reserve, the European Central Bank and the Bank of England raised interest rates early in the period in response to elevated inflation. After July 2023, the Federal Reserve kept the federal funds rate at a target range of 5.25%–5.50%. Treasury yields reached peak levels and then fell in response to the policy shift. The Bank of Japan raised its policy rate for the first time in 17 years, but many central banks signalled potential rate cuts for 2024.

The Fund underperformed the index, with underweight exposure to corporate bonds in the financial sector detracting from performance. Holdings in provincial bonds also detracted from performance.

Conversely, overweight exposure to corporate bonds in the energy sector contributed to performance.

The Fund's currency management detracted from performance.

The Fund held selected government bond futures to manage duration (sensitivity to interest rates), which contributed to performance.

Over the period, the Fund's exposure to New Zealand increased, while exposure to Canada decreased, as the portfolio management team increased exposure to higher-yielding corporate and foreign government bonds, deploying cash in order to capture a capital gain opportunity.

Net Assets

The Fund's net assets decreased by 6.3% during the period to \$21.3 million. This change was composed primarily of \$0.6 million in net income (including any interest and/or dividend income) from investment performance, after deducting fees and expenses, and a decrease of \$2.0 million due to net securityholder activity (including sales, redemptions and cash distributions).

Fees and Expenses

The management expense ratio ("MER") for each series during the year ended March 31, 2024, was generally similar to the MER for the year ended March 31, 2023. Total expenses paid vary from period to period mainly as a result of changes in average assets in each series. The MER for F Series decreased due to a decrease in the management fee rate effective July 22, 2022, as noted in the *Fund Formation and Series Information* section of the report. The MERs for all series are presented in the *Financial Highlights* section of this report.

Recent Developments

Effective July 18, 2023, the Fund was renamed Canada Life Global Core Plus Bond Fund.

The following changes are effective July 17, 2024:

- A Series, F Series, N Series, QF Series, QFW Series and W Series of the Fund are closed to new investments, except for purchases from investors that hold securities of the Fund as of this date, and continue to hold these securities;
- the Fund's management fee will be reduced for A Series to 1.10% from 1.55%; for F Series and QFW Series to 0.55% from 0.85%; for QF Series to 0.60% from 1.05%; and for W Series to 1.05% from 1.35%; and
- the management fee reductions applicable to A Series and QF Series of the Fund are lowered to 0.10% from 0.20% based on the portion of an investor's Eligible Investments above \$100,000 (Tier 2).

Related Party Transactions

Management and Administration Services

For each applicable series, the Fund paid management fees and administration fees to the Manager at the annual rates specified under *Fund Formation and Series Information* in this report and as more fully described in the Simplified Prospectus. In return for the administration fees, the Manager pays all costs and expenses (other than certain specified fund costs) required to operate the Fund that are not included in management fees. Prior to January 1, 2024, the Manager paid the administration fees to Mackenzie for providing day-to-day administration services, including financial reporting, communications to investors and securityholder reporting, maintaining the books and records of the Fund, NAV calculations and processing orders for securities of the Fund. See also *Management Fees*.

CANADA LIFE GLOBAL CORE PLUS BOND FUND

(Formerly Canada Life Pathways Global Core Plus Bond Fund)

ANNUAL MANAGEMENT REPORT OF FUND PERFORMANCE | For the Year Ended March 31, 2024

Other Related Party Transactions

Certain other investment funds managed by CLIML and segregated fund policies issued by Canada Life may invest in the Fund on a prospectus-exempt basis in accordance with the investment objectives of those funds. At March 31, 2024, these other investment funds and segregated funds owned 56.9% of the Fund's NAV. All related party transactions are based on the NAV per security on each transaction day. As a result of these investments, the Fund may be subject to large transaction risk as discussed in the Fund's Simplified Prospectus. CLIML manages this risk to reduce the possibility of any adverse effect on the Fund or on its investors, through such processes as requiring advance notice of large redemptions.

During the period, the Fund received \$0.002 million in income distributions from investments in exchange-traded funds ("ETFs") managed by Mackenzie to offset fees paid within those ETFs. There is no assurance that these distributions will continue in the future.

During the period, the Manager relied on a standing instruction from the Canada Life Funds' Independent Review Committee to sell all its holdings in underlying funds managed by Mackenzie. The Manager's policies are designed to ensure that any related party transaction (i) is made free from any influence by an entity related to the Manager and without taking into account any considerations relevant to an entity related to the Manager; (ii) represents the business judgment of the Manager, uninfluenced by considerations other than the best interests of the Fund; and (iii) achieves a fair and reasonable result for the Fund.

During the period, the Fund relied on standing instructions provided by the Canada Life Funds' Independent Review Committee for inter-fund trades that have occurred in the Fund.

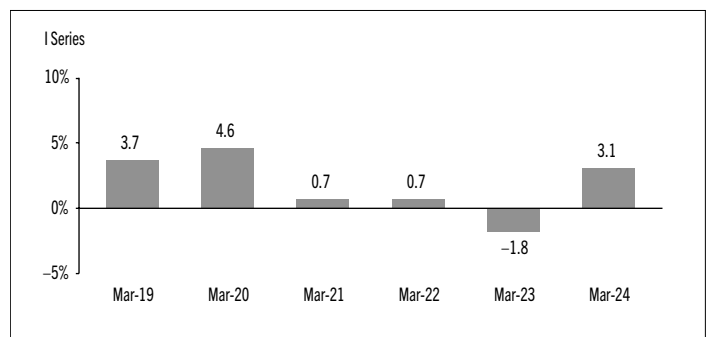
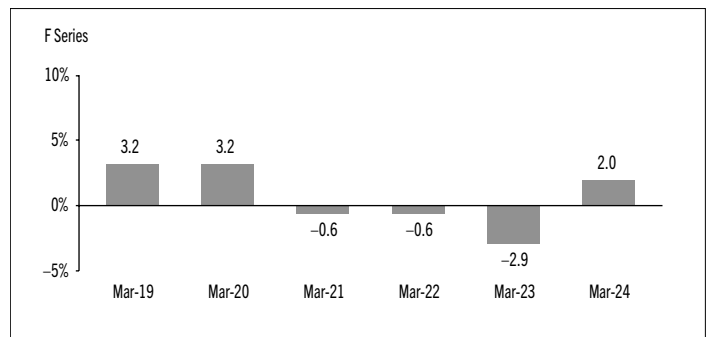
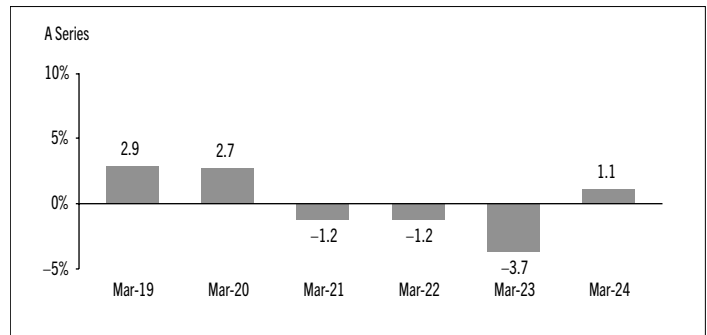
Past Performance

The Fund's performance information assumes all distributions made by the Fund in the periods presented are reinvested in additional securities of the relevant series of the Fund. The performance information does not take into account sales, redemption, distribution or other optional charges, or income taxes payable by any investor that would have reduced returns or performance. The past performance of the Fund is not necessarily an indication of how it will perform in the future.

If you hold this Fund outside of a registered plan, income and capital gains distributions paid to you increase your income for tax purposes whether paid to you in cash or reinvested in additional securities of the Fund. The amount of reinvested taxable distributions is added to the adjusted cost base of the securities that you own. This would decrease your capital gain or increase your capital loss when you later redeem from the Fund, thereby ensuring that you are not taxed on this amount again. Please consult your tax advisor regarding your personal tax situation.

Year-by-Year Returns

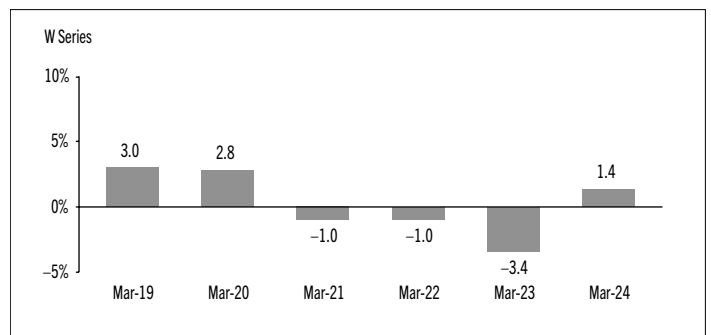
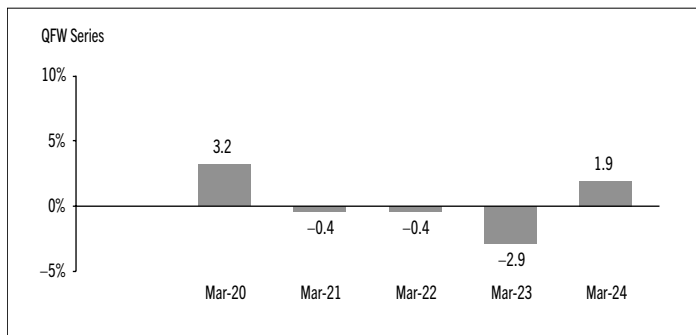
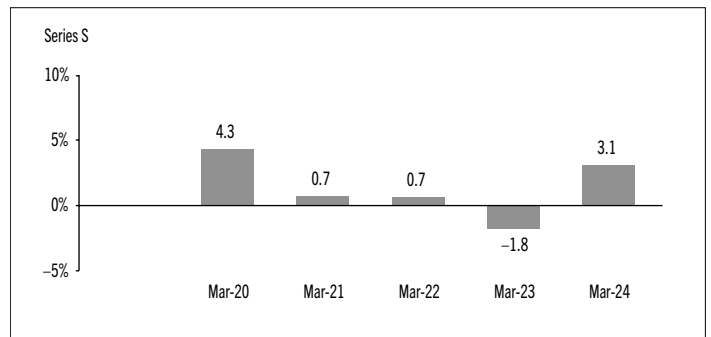
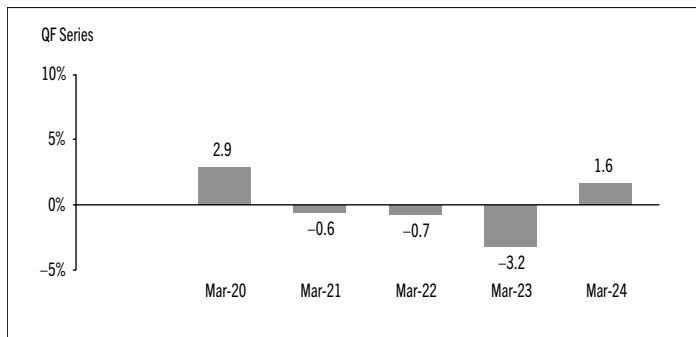
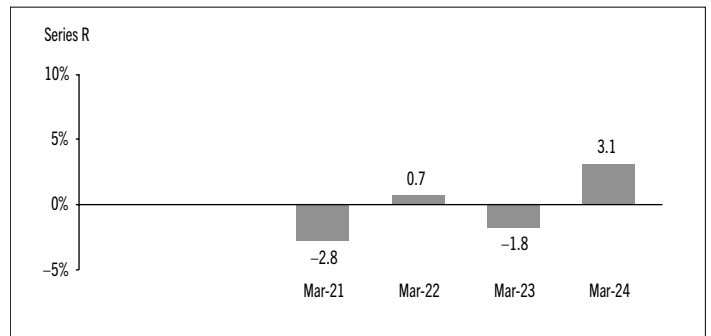
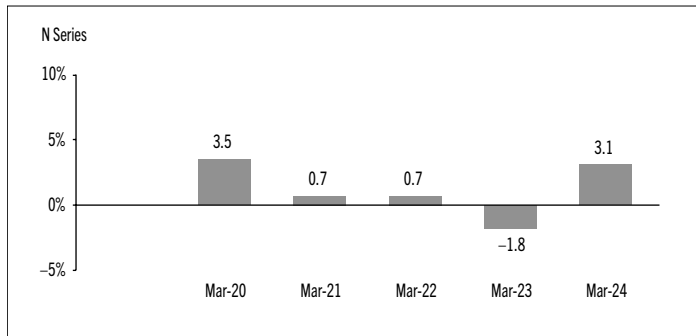
The following bar charts present the performance of each series of the Fund for each of the fiscal periods shown. The charts show, in percentage terms, how much an investment made on the first day of each fiscal period, or on the series inception or reinstatement date, as applicable, would have increased or decreased by the last day of the fiscal period presented. Series inception or reinstatement dates can be found under *Fund Formation and Series Information*.



CANADA LIFE GLOBAL CORE PLUS BOND FUND

(Formerly Canada Life Pathways Global Core Plus Bond Fund)

ANNUAL MANAGEMENT REPORT OF FUND PERFORMANCE | For the Year Ended March 31, 2024



CANADA LIFE GLOBAL CORE PLUS BOND FUND

(Formerly Canada Life Pathways Global Core Plus Bond Fund)

ANNUAL MANAGEMENT REPORT OF FUND PERFORMANCE | For the Year Ended March 31, 2024

Annual Compound Returns

The following table compares the historical annual compound total returns for each series of the Fund with the relevant index or indices shown below for each of the periods ended March 31, 2024. Investors cannot invest in an index without incurring fees, expenses and commissions, which are not reflected in these performance figures.

All index returns are calculated in Canadian dollars on a total return basis, meaning that all dividend payments, interest income accruals and interest payments are reinvested.

Percentage Return: ¹	1 Yr	3 Yr	5 Yr	10 Yr	Since Inception ²
A Series	1.1	-1.3	-0.5	n/a	0.1
F Series	2.0	-0.5	0.2	n/a	0.7
I Series	3.1	0.6	1.4	n/a	2.0
N Series	3.1	0.6	n/a	n/a	1.4
QF Series	1.6	-0.8	n/a	n/a	0.0
QFW Series	1.9	-0.5	n/a	n/a	0.3
Series R	3.1	0.7	n/a	n/a	-0.2
Series S	3.1	0.6	n/a	n/a	1.4
W Series	1.4	-1.0	-0.3	n/a	0.3
ICE BofA Global Broad Market (Hedged) Index	2.5	-2.4	0.0	n/a	Note 3

The ICE BofA Global Broad Market (Hedged) Index tracks the performance of investment grade debt publicly issued in major domestic and eurobond markets, including sovereign, quasi-government, corporate, securitized and collateralized securities. Qualifying bonds must be rated "BBB" or higher and have a remaining term to maturity of at least one year. The foreign currency exposure is hedged back to the Canadian dollar.

- (1) The percentage return differs for each series because the management fee rate and expenses differ for each series.
- (2) The return since inception for each series will differ when the inception date differs and is only provided when a series has been active for a period of less than 10 years.
- (3) The return of the ICE BofA Global Broad Market (Hedged) Index since inception for each applicable series is as follows: A Series 0.9%, F Series 0.9%, I Series 0.9%, N Series -1.0%, QF Series -1.0%, QFW Series -1.0%, Series R -2.6%, Series S -0.1%, W Series 0.9%.

CANADA LIFE GLOBAL CORE PLUS BOND FUND

(Formerly Canada Life Pathways Global Core Plus Bond Fund)

ANNUAL MANAGEMENT REPORT OF FUND PERFORMANCE | For the Year Ended March 31, 2024

Summary of Investment Portfolio at March 31, 2024

PORTFOLIO ALLOCATION	% OF NAV
Bonds	94.3
<i>Bonds</i>	84.7
<i>Long bond futures*</i>	9.6
Short-term investments	4.3
Other assets (liabilities)	1.0
Equities	0.4
Purchased currency options**	–

REGIONAL ALLOCATION	% OF NAV
United States	45.9
Canada	23.0
Mexico	6.7
Brazil	5.7
New Zealand	5.7
United Kingdom	4.4
Germany	3.7
South Africa	1.6
Other assets (liabilities)	1.0
France	0.7
Belgium	0.6
Ireland	0.2
Switzerland	0.2
Colombia	0.2
Luxembourg	0.2
Other	0.2

SECTOR ALLOCATION	% OF NAV
Foreign government bonds	50.7
Corporate bonds	33.7
Federal bonds	6.1
Foreign government short-term discount notes	4.3
Provincial bonds	2.4
Other assets (liabilities)	1.0
Supra-national bonds	0.8
Term loans	0.5
Financials	0.3
Communication services	0.1
Municipal bonds	0.1

BONDS BY CREDIT RATING†	% OF NAV
AAA	14.4
AA	21.8
A	6.5
BBB	20.7
Less than BBB	14.0
Unrated	7.3

* Notional values represent 9.6% of NAV for long bond futures.

** Notional values represent 12.1% of NAV for purchased currency options.

† Credit ratings and rating categories are based on ratings issued by a designated rating organization.

TOP 25 POSITIONS

Issuer	% OF NAV
United States Treasury Bills 5.39% 08-08-2024	8.2
United States Treasury 0.13% 01-15-2032 Inflation Indexed	4.3
Government of Canada 3.50% 03-01-2028	3.9
Cash and cash equivalents	3.8
United States Treasury 3.50% 02-15-2033	3.8
Government of New Zealand 3.50% 04-14-2033	3.6
United States Treasury 0.25% 07-15-2029 Inflation Indexed	3.0
Government of Brazil 10.00% 01-01-2027	2.5
United States Treasury 3.88% 08-15-2033	2.5
Government of Mexico 7.75% 11-23-2034	2.4
United States Treasury 0.13% 02-15-2052 Inflation Indexed	2.0
United States Treasury Bills 5.34% 05-28-2024	2.0
Bundesobligation 2.10% 04-12-2029	1.9
Government of Germany 0% 08-15-2052	1.8
Government of South Africa 8.88% 02-28-2035	1.6
Government of Mexico 2.66% 05-24-2031	1.6
Government of New Zealand 4.25% 05-15-2034	1.4
Government of Mexico 8.50% 05-31-2029	1.3
Government of Brazil 6.25% 03-18-2031	1.3
Government of Brazil 10.00% 01-01-2031	1.2
United States Treasury 2.88% 05-15-2032	1.2
Province of Alberta 2.05% 06-01-2030	1.0
United States Treasury 3.75% 12-31-2028	1.0
America Movil SAB de CV 9.50% 01-27-2031	0.9
TransCanada Trust F/R 05-18-2077 Callable 2027	0.9

Top long positions as a percentage of total net asset value **59.1**

The Fund held no short positions at the end of the period.

The investments and percentages may have changed since March 31, 2024, due to the ongoing portfolio transactions of the Fund. Quarterly updates of holdings are available within 60 days of the end of each quarter except for March 31, the Fund's fiscal year-end, when they are available within 90 days. The quarterly updates are available by visiting www.canadalifeinvest.ca.

CANADA LIFE GLOBAL CORE PLUS BOND FUND

(Formerly Canada Life Pathways Global Core Plus Bond Fund)

ANNUAL MANAGEMENT REPORT OF FUND PERFORMANCE | For the Year Ended March 31, 2024

Financial Highlights

The following tables show selected key financial information about the Fund and are intended to help you understand the Fund's financial performance for each of the fiscal periods presented below. If during the period a fund or series was established or reinstated, "period" represents the period from inception or reinstatement to the end of that fiscal period. Series inception or reinstatement dates can be found under *Fund Formation and Series Information*.

THE FUND'S NET ASSETS PER SECURITY (\$)¹

A Series	Mar. 31 2024	Mar. 31 2023	Mar. 31 2022	Mar. 31 2021	Mar. 31 2020
Net assets, beginning of period	9.05	9.71	9.95	10.39	10.25
Increase (decrease) from operations:					
Total revenue	0.41	0.45	0.34	0.23	0.32
Total expenses	(0.17)	(0.18)	(0.19)	(0.20)	(0.19)
Realized gains (losses) for the period	(0.57)	(0.52)	–	0.14	0.58
Unrealized gains (losses) for the period	0.37	(0.13)	(0.28)	(0.40)	(0.20)
Total increase (decrease) from operations²	0.04	(0.38)	(0.13)	(0.23)	0.51
Distributions:					
From net investment income (excluding Canadian dividends)	(0.21)	(0.29)	(0.11)	(0.16)	(0.14)
From Canadian dividends	(0.01)	(0.01)	(0.01)	(0.02)	–
From capital gains	–	–	–	(0.13)	–
Return of capital	–	–	–	–	–
Total annual distributions³	(0.22)	(0.30)	(0.12)	(0.31)	(0.14)
Net assets, end of period	8.94	9.05	9.71	9.95	10.39
F Series	Mar. 31 2024	Mar. 31 2023	Mar. 31 2022	Mar. 31 2021	Mar. 31 2020
Net assets, beginning of period	9.07	9.72	9.95	10.40	10.26
Increase (decrease) from operations:					
Total revenue	0.41	0.45	0.34	0.23	0.33
Total expenses	(0.10)	(0.10)	(0.13)	(0.13)	(0.13)
Realized gains (losses) for the period	(0.61)	(0.30)	0.06	0.21	0.46
Unrealized gains (losses) for the period	0.37	(0.13)	(0.28)	(0.40)	(0.21)
Total increase (decrease) from operations²	0.07	(0.08)	(0.01)	(0.09)	0.45
Distributions:					
From net investment income (excluding Canadian dividends)	(0.27)	(0.34)	(0.15)	(0.19)	(0.18)
From Canadian dividends	(0.02)	(0.02)	(0.02)	(0.05)	(0.01)
From capital gains	–	–	–	(0.15)	–
Return of capital	–	–	–	–	–
Total annual distributions³	(0.29)	(0.36)	(0.17)	(0.39)	(0.19)
Net assets, end of period	8.96	9.07	9.72	9.95	10.40

FW Series⁴	Mar. 31 2024	Mar. 31 2023	Mar. 31 2022	Mar. 31 2021	Mar. 31 2020
Net assets, beginning of period	n/a	n/a	9.98	10.40	10.24
Increase (decrease) from operations:					
Total revenue	n/a	n/a	0.35	0.23	0.31
Total expenses	n/a	n/a	(0.11)	(0.12)	(0.11)
Realized gains (losses) for the period	n/a	n/a	0.07	0.32	0.50
Unrealized gains (losses) for the period	n/a	n/a	(0.29)	(0.41)	(0.19)
Total increase (decrease) from operations²	n/a	n/a	0.02	0.02	0.51
Distributions:					
From net investment income (excluding Canadian dividends)	n/a	n/a	(0.17)	(0.20)	(0.20)
From Canadian dividends	n/a	n/a	(0.02)	(0.05)	(0.01)
From capital gains	n/a	n/a	–	(0.14)	–
Return of capital	n/a	n/a	–	–	–
Total annual distributions³	n/a	n/a	(0.19)	(0.39)	(0.21)
Net assets, end of period	n/a	n/a	9.76	9.98	10.40
I Series	Mar. 31 2024	Mar. 31 2023	Mar. 31 2022	Mar. 31 2021	Mar. 31 2020
Net assets, beginning of period	9.09	9.74	10.00	10.42	10.25
Increase (decrease) from operations:					
Total revenue	0.42	0.45	0.35	0.23	0.34
Total expenses	–	(0.01)	(0.01)	(0.01)	(0.01)
Realized gains (losses) for the period	(0.52)	(0.51)	0.05	0.30	0.33
Unrealized gains (losses) for the period	0.37	(0.13)	(0.29)	(0.41)	(0.21)
Total increase (decrease) from operations²	0.27	(0.20)	0.10	0.11	0.45
Distributions:					
From net investment income (excluding Canadian dividends)	(0.36)	(0.44)	(0.28)	(0.25)	(0.29)
From Canadian dividends	(0.03)	(0.02)	(0.03)	(0.10)	(0.01)
From capital gains	–	–	(0.02)	(0.15)	–
Return of capital	–	–	–	–	–
Total annual distributions³	(0.39)	(0.46)	(0.33)	(0.50)	(0.30)
Net assets, end of period	8.98	9.09	9.74	10.00	10.42

(1) These calculations are prescribed by securities regulations and are not intended to be a reconciliation between opening and closing net assets per security. This information is derived from the Fund's audited annual financial statements. The net assets per security presented in the financial statements may differ from the net asset value per security calculated for fund pricing purposes. An explanation of these differences, if any, can be found in the *Notes to Financial Statements*.

(2) Net assets and distributions are based on the actual number of securities outstanding at the relevant time. The increase/decrease from operations is based on the weighted average number of securities outstanding over the fiscal period.

(3) Distributions were paid in cash/reinvested in additional securities of the Fund, or both.

(4) Effective September 16, 2022, FW Series was redesignated as F Series.

CANADA LIFE GLOBAL CORE PLUS BOND FUND

(Formerly Canada Life Pathways Global Core Plus Bond Fund)

ANNUAL MANAGEMENT REPORT OF FUND PERFORMANCE | For the Year Ended March 31, 2024

THE FUND'S NET ASSETS PER SECURITY (\$)¹ (cont'd)

	Mar. 31 2024	Mar. 31 2023	Mar. 31 2022	Mar. 31 2021	Mar. 31 2020
N Series					
Net assets, beginning of period	8.95	9.59	9.84	10.26	10.00
Increase (decrease) from operations:					
Total revenue	0.41	0.45	0.34	0.22	0.12
Total expenses	–	(0.01)	(0.01)	(0.01)	–
Realized gains (losses) for the period	(0.56)	(0.56)	0.05	(0.11)	0.35
Unrealized gains (losses) for the period	0.36	(0.13)	(0.28)	(0.38)	(0.08)
Total increase (decrease) from operations²	0.21	(0.25)	0.10	(0.28)	0.39
Distributions:					
From net investment income (excluding Canadian dividends)	(0.36)	(0.44)	(0.28)	(0.25)	(0.09)
From Canadian dividends	(0.02)	(0.02)	(0.03)	(0.10)	(0.01)
From capital gains	–	–	(0.01)	(0.15)	–
Return of capital	–	–	–	–	–
Total annual distributions³	(0.38)	(0.46)	(0.32)	(0.50)	(0.10)
Net assets, end of period	8.84	8.95	9.59	9.84	10.26
QF Series					
Net assets, beginning of period	8.96	9.62	9.85	10.25	10.00
Increase (decrease) from operations:					
Total revenue	0.41	0.45	0.34	0.22	0.13
Total expenses	(0.11)	(0.12)	(0.14)	(0.14)	(0.07)
Realized gains (losses) for the period	(0.57)	(0.42)	(0.05)	(0.16)	0.32
Unrealized gains (losses) for the period	0.36	(0.13)	(0.28)	(0.38)	(0.08)
Total increase (decrease) from operations²	0.09	(0.22)	(0.13)	(0.46)	0.30
Distributions:					
From net investment income (excluding Canadian dividends)	(0.24)	(0.33)	(0.15)	(0.17)	(0.03)
From Canadian dividends	(0.02)	(0.02)	(0.01)	(0.04)	(0.01)
From capital gains	–	–	–	(0.13)	–
Return of capital	–	–	–	–	–
Total annual distributions³	(0.26)	(0.35)	(0.16)	(0.34)	(0.04)
Net assets, end of period	8.84	8.96	9.62	9.85	10.25
QFW Series					
Net assets, beginning of period	8.97	9.62	9.84	10.26	10.00
Increase (decrease) from operations:					
Total revenue	0.41	0.45	0.34	0.22	0.13
Total expenses	(0.10)	(0.11)	(0.12)	(0.12)	(0.03)
Realized gains (losses) for the period	(0.68)	(0.96)	(0.50)	(0.20)	0.31
Unrealized gains (losses) for the period	0.36	(0.13)	(0.28)	(0.38)	(0.08)
Total increase (decrease) from operations²	(0.01)	(0.75)	(0.56)	(0.48)	0.33
Distributions:					
From net investment income (excluding Canadian dividends)	(0.26)	(0.34)	(0.16)	(0.20)	(0.06)
From Canadian dividends	(0.02)	(0.02)	(0.02)	(0.05)	(0.01)
From capital gains	–	–	–	(0.14)	–
Return of capital	–	–	–	–	–
Total annual distributions³	(0.28)	(0.36)	(0.18)	(0.39)	(0.07)
Net assets, end of period	8.86	8.97	9.62	9.84	10.26

Series R	Mar. 31 2024	Mar. 31 2023	Mar. 31 2022	Mar. 31 2021	Mar. 31 2020
Net assets, beginning of period	8.51	9.12	9.36	10.00	n/a
Increase (decrease) from operations:					
Total revenue	0.39	0.42	0.32	0.12	n/a
Total expenses	–	(0.01)	–	–	n/a
Realized gains (losses) for the period	(0.48)	(0.45)	0.02	(0.18)	n/a
Unrealized gains (losses) for the period	0.35	(0.12)	(0.27)	(0.20)	n/a
Total increase (decrease) from operations²	0.26	(0.16)	0.07	(0.26)	n/a
Distributions:					
From net investment income (excluding Canadian dividends)	(0.34)	(0.41)	(0.27)	(0.18)	n/a
From Canadian dividends	(0.02)	(0.02)	(0.02)	(0.06)	n/a
From capital gains	–	–	(0.02)	(0.14)	n/a
Return of capital	–	–	–	–	n/a
Total annual distributions³	(0.36)	(0.43)	(0.31)	(0.38)	n/a
Net assets, end of period	8.40	8.51	9.12	9.36	n/a

Series S	Mar. 31 2024	Mar. 31 2023	Mar. 31 2022	Mar. 31 2021	Mar. 31 2020
Net assets, beginning of period	8.90	9.54	9.79	10.20	10.00
Increase (decrease) from operations:					
Total revenue	0.41	0.44	0.34	0.22	0.26
Total expenses	–	(0.01)	(0.01)	(0.01)	(0.01)
Realized gains (losses) for the period	(0.51)	(0.44)	(0.03)	(0.07)	0.62
Unrealized gains (losses) for the period	0.36	(0.13)	(0.28)	(0.38)	(0.16)
Total increase (decrease) from operations²	0.26	(0.14)	0.02	(0.24)	0.71
Distributions:					
From net investment income (excluding Canadian dividends)	(0.36)	(0.43)	(0.28)	(0.25)	(0.22)
From Canadian dividends	(0.02)	(0.02)	(0.03)	(0.10)	(0.01)
From capital gains	–	–	(0.01)	(0.14)	–
Return of capital	–	–	–	–	–
Total annual distributions³	(0.38)	(0.45)	(0.32)	(0.49)	(0.23)
Net assets, end of period	8.79	8.90	9.54	9.79	10.20

W Series	Mar. 31 2024	Mar. 31 2023	Mar. 31 2022	Mar. 31 2021	Mar. 31 2020
Net assets, beginning of period	9.08	9.73	9.96	10.38	10.23
Increase (decrease) from operations:					
Total revenue	0.41	0.45	0.34	0.23	0.33
Total expenses	(0.15)	(0.16)	(0.17)	(0.18)	(0.18)
Realized gains (losses) for the period	(0.62)	(0.50)	0.01	0.17	0.37
Unrealized gains (losses) for the period	0.37	(0.13)	(0.28)	(0.40)	(0.21)
Total increase (decrease) from operations²	0.01	(0.34)	(0.10)	(0.18)	0.31
Distributions:					
From net investment income (excluding Canadian dividends)	(0.22)	(0.31)	(0.12)	(0.17)	(0.14)
From Canadian dividends	(0.01)	(0.01)	(0.01)	(0.02)	–
From capital gains	–	–	–	(0.14)	–
Return of capital	–	–	–	–	–
Total annual distributions³	(0.23)	(0.32)	(0.13)	(0.33)	(0.14)
Net assets, end of period	8.97	9.08	9.73	9.96	10.38

CANADA LIFE GLOBAL CORE PLUS BOND FUND

(Formerly Canada Life Pathways Global Core Plus Bond Fund)

ANNUAL MANAGEMENT REPORT OF FUND PERFORMANCE | For the Year Ended March 31, 2024

RATIOS AND SUPPLEMENTAL DATA

	Mar. 31 2024	Mar. 31 2023	Mar. 31 2022	Mar. 31 2021	Mar. 31 2020
A Series					
Total net asset value (\$000) ¹	829	1,483	1,691	1,500	978
Securities outstanding (000) ¹	93	164	174	151	94
Management expense ratio (%) ²	1.94	1.96	1.95	1.95	1.89
Management expense ratio before waivers or absorptions (%) ²	1.95	1.97	1.97	1.96	1.90
Trading expense ratio (%) ³	0.03	0.04	0.04	0.04	0.06
Portfolio turnover rate (%) ⁴	75.82	67.76	140.13	131.76	129.42
Net asset value per security (\$)	8.93	9.05	9.71	9.95	10.38
F Series					
Total net asset value (\$000) ¹	463	839	486	701	448
Securities outstanding (000) ¹	52	92	50	70	43
Management expense ratio (%) ²	1.10	1.16	1.34	1.33	1.31
Management expense ratio before waivers or absorptions (%) ²	1.11	1.17	1.36	1.35	1.32
Trading expense ratio (%) ³	0.03	0.04	0.04	0.04	0.06
Portfolio turnover rate (%) ⁴	75.82	67.76	140.13	131.76	129.42
Net asset value per security (\$)	8.96	9.07	9.72	9.95	10.39
FW Series⁵					
Total net asset value (\$000) ¹	n/a	n/a	627	879	1,021
Securities outstanding (000) ¹	n/a	n/a	64	88	98
Management expense ratio (%) ²	n/a	n/a	1.09	1.07	1.06
Management expense ratio before waivers or absorptions (%) ²	n/a	n/a	1.10	1.09	1.07
Trading expense ratio (%) ³	n/a	n/a	0.04	0.04	0.06
Portfolio turnover rate (%) ⁴	n/a	n/a	140.13	131.76	129.42
Net asset value per security (\$)	n/a	n/a	9.76	9.98	10.39
I Series					
Total net asset value (\$000) ¹	6,720	7,174	8,733	9,332	10,212
Securities outstanding (000) ¹	749	789	896	933	980
Management expense ratio (%) ²	0.01	0.03	0.01	0.02	0.01
Management expense ratio before waivers or absorptions (%) ²	0.02	0.04	0.02	0.03	0.02
Trading expense ratio (%) ³	0.03	0.04	0.04	0.04	0.06
Portfolio turnover rate (%) ⁴	75.82	67.76	140.13	131.76	129.42
Net asset value per security (\$)	8.98	9.09	9.74	10.00	10.41
N Series					
Total net asset value (\$000) ¹	214	290	432	682	188
Securities outstanding (000) ¹	24	32	45	69	18
Management expense ratio (%) ²	0.01	0.03	0.01	0.01	-
Management expense ratio before waivers or absorptions (%) ²	0.02	0.04	0.02	0.03	0.01
Trading expense ratio (%) ³	0.03	0.04	0.04	0.04	0.06
Portfolio turnover rate (%) ⁴	75.82	67.76	140.13	131.76	129.42
Net asset value per security (\$)	8.83	8.95	9.59	9.84	10.25

	Mar. 31 2024	Mar. 31 2023	Mar. 31 2022	Mar. 31 2021	Mar. 31 2020
QF Series					
Total net asset value (\$000) ¹	48	253	230	142	1
Securities outstanding (000) ¹	5	28	24	14	-
Management expense ratio (%) ²	1.44	1.45	1.42	1.36	1.31
Management expense ratio before waivers or absorptions (%) ²	1.45	1.46	1.44	1.38	1.32
Trading expense ratio (%) ³	0.03	0.04	0.04	0.04	0.06
Portfolio turnover rate (%) ⁴	75.82	67.76	140.13	131.76	129.42
Net asset value per security (\$)	8.83	8.96	9.62	9.85	10.24
QFW Series					
Total net asset value (\$000) ¹	100	177	772	220	1
Securities outstanding (000) ¹	11	20	80	22	-
Management expense ratio (%) ²	1.14	1.16	1.14	1.10	1.05
Management expense ratio before waivers or absorptions (%) ²	1.15	1.17	1.15	1.11	1.06
Trading expense ratio (%) ³	0.03	0.04	0.04	0.04	0.06
Portfolio turnover rate (%) ⁴	75.82	67.76	140.13	131.76	129.42
Net asset value per security (\$)	8.86	8.97	9.62	9.84	10.25
Series R					
Total net asset value (\$000) ¹	1	1	1	1	n/a
Securities outstanding (000) ¹	-	-	-	-	n/a
Management expense ratio (%) ²	-	0.02	0.01	0.01	n/a
Management expense ratio before waivers or absorptions (%) ²	0.01	0.03	0.02	0.02	n/a
Trading expense ratio (%) ³	0.03	0.04	0.04	0.04	n/a
Portfolio turnover rate (%) ⁴	75.82	67.76	140.13	131.76	n/a
Net asset value per security (\$)	8.40	8.51	9.12	9.36	n/a

(1) This information is provided as at the end of the fiscal period shown.

(2) Management expense ratio ("MER") is based on total expenses, excluding commissions and other portfolio transaction costs, income taxes and withholding taxes, for the stated period and is expressed as an annualized percentage of daily average net assets during the period, except as noted. In the period a series is established, the MER is annualized from the date of inception to the end of the period. Where the Fund directly invests in securities of another fund (including exchange-traded funds or "ETFs"), the MERs presented for the Fund include the portion of MERs of the other fund(s) attributable to this investment. Any income distributions received from ETFs managed by affiliates of the Manager, with the intention of offsetting fees paid within those ETFs but which are not considered to be duplicative fees under regulatory requirements, are treated as waived expenses for MER purposes. The Manager may waive or absorb operating expenses at its discretion and stop waiving or absorbing such expenses at any time without notice.

(3) The trading expense ratio ("TER") represents total commissions and other portfolio transaction costs incurred as an annualized percentage of daily average net assets during the period. Where the Fund invests in securities of another fund (including ETFs), the TERs presented for the Fund include the portion of TERs of the other fund(s) attributable to this investment.

(4) The Fund's portfolio turnover rate indicates how actively the Fund's portfolio advisor manages its portfolio investments. A portfolio turnover rate of 100% is equivalent to the Fund buying and selling all of the securities in its portfolio once in the course of the period. The higher the Fund's portfolio turnover rate in a period, the greater the trading costs payable by the Fund in the period, and the greater the chance of an investor receiving taxable capital gains in the year. There is not necessarily a relationship between a high turnover rate and the performance of a fund. The portfolio turnover rate is not provided when the Fund is less than one year old. The value of any trades to realign the Fund's portfolio after a fund merger, if any, is excluded from the portfolio turnover rate.

(5) Effective September 16, 2022, FW Series was redesignated as F Series.

CANADA LIFE GLOBAL CORE PLUS BOND FUND

(Formerly Canada Life Pathways Global Core Plus Bond Fund)

ANNUAL MANAGEMENT REPORT OF FUND PERFORMANCE | For the Year Ended March 31, 2024

RATIOS AND SUPPLEMENTAL DATA (cont'd)

Series S	Mar. 31 2024	Mar. 31 2023	Mar. 31 2022	Mar. 31 2021	Mar. 31 2020
Total net asset value (\$000) ¹	12,083	11,329	10,443	8,107	2,668
Securities outstanding (000) ¹	1,375	1,272	1,095	828	261
Management expense ratio (%) ²	0.03	0.04	0.03	0.03	0.03
Management expense ratio before waivers or absorptions (%) ²	0.03	0.05	0.04	0.05	0.04
Trading expense ratio (%) ³	0.03	0.04	0.04	0.04	0.06
Portfolio turnover rate (%) ⁴	75.82	67.76	140.13	131.76	129.42
Net asset value per security (\$)	8.79	8.90	9.54	9.79	10.20
W Series	Mar. 31 2024	Mar. 31 2023	Mar. 31 2022	Mar. 31 2021	Mar. 31 2020
Total net asset value (\$000) ¹	797	1,151	1,244	1,365	910
Securities outstanding (000) ¹	89	127	128	137	88
Management expense ratio (%) ²	1.70	1.71	1.69	1.70	1.71
Management expense ratio before waivers or absorptions (%) ²	1.71	1.72	1.70	1.71	1.71
Trading expense ratio (%) ³	0.03	0.04	0.04	0.04	0.06
Portfolio turnover rate (%) ⁴	75.82	67.76	140.13	131.76	129.42
Net asset value per security (\$)	8.96	9.08	9.73	9.96	10.38

Management Fees

The management fee for each applicable series is calculated and accrued daily as a percentage of its NAV. The Fund's management fees were used by the Manager in part to pay Mackenzie, an affiliate of the Manager, for investment advisory services, including managing the investment portfolio of the Fund and/or the underlying fund(s), as applicable, including providing investment analysis and recommendations, making investment decisions and making brokerage arrangements for the purchase and sale of the investment portfolio.

The Manager is responsible for paying certain administrative costs and all sales commissions, trailing commissions and any other compensation (collectively, "distribution-related payments") to registered dealers whose clients invest in the Fund. As the principal distributor for the Fund, Quadrus Investment Services Ltd. ("Quadrus"), an affiliate of the Manager, is paid trailing commissions out of the management fees.

The Manager used approximately 37% of the total management fee revenues received from all Canada Life Mutual Funds during the period to fund distribution-related payments to Quadrus and Quadrus-authorized dealers. In comparison, such distribution-related payments for the Fund represented on average 24% of the management fees paid by all applicable series of the Fund during the period. The actual percentage for each series may be higher or lower than the average depending on the level of trailing commissions and sales commissions paid for that series.

CANADA LIFE GLOBAL CORE PLUS BOND FUND

(Formerly Canada Life Pathways Global Core Plus Bond Fund)

ANNUAL MANAGEMENT REPORT OF FUND PERFORMANCE | For the Year Ended March 31, 2024

Fund Formation and Series Information

The Fund may have undergone a number of changes, such as a reorganization or a change in manager, mandate or name. A history of the major changes affecting the Fund in the last 10 years can be found in the Fund's Simplified Prospectus.

Date of Formation: October 12, 2018

The Fund may issue an unlimited number of securities of each series. The number of issued and outstanding securities of each series is disclosed under *Financial Highlights*.

A Series securities are offered to investors investing a minimum of \$500.

F Series securities are offered to investors investing a minimum of \$500, who are enrolled in a Quadrus-sponsored fee-for-service or wrap program and who are subject to an asset-based fee.

I Series securities are offered to investors investing a minimum of \$25,000, who are participating in the Canada Life Constellation Managed Portfolios program, and who have entered into an I Series Account Agreement with CLIML and Quadrus which specifies the fees applicable to this account.

N Series securities are offered to investors investing a minimum of \$500, who have eligible minimum total holdings of \$500,000, and who have entered into an N Series Account Agreement with CLIML and Quadrus.

QF Series securities are offered to retail investors investing a minimum of \$500. Investors are required to negotiate their advisor service fee, which cannot exceed 1.25%, with their financial advisor.

QFW Series securities are offered to high net worth investors investing a minimum of \$500 and who have eligible minimum total holdings of \$500,000. Investors are required to negotiate their advisor service fee, which cannot exceed 1.25%, with their financial advisor.

Series R securities are offered only to other funds managed by CLIML on a non-prospectus basis in connection with fund-of-fund arrangements.

Series S securities are offered to The Canada Life Assurance Company and certain other mutual funds, but may be sold to other investors as determined by CLIML.

W Series securities are offered to investors investing a minimum of \$500 and who have eligible minimum total holdings of \$500,000.

Effective September 16, 2022, FW Series securities were redesignated as F Series securities.

An investor in the Fund may choose among different purchase options that are available under each series. These purchase options are a sales charge purchase option and a no-load purchase option. The charges under the sales charge purchase option are negotiated by investors with their dealers. Not all purchase options are available under each series of the Fund, and the charges for each purchase option may vary among the different series. For further details on these purchase options, please refer to the Fund's Simplified Prospectus and Fund Facts.

Series	Inception/ Reinstatement Date	Management Fee	Administration Fee
A Series	October 22, 2018	1.55%	0.20%
F Series	October 22, 2018	0.85% ⁽³⁾	0.15%
FW Series	None issued ⁽⁴⁾	0.85%	0.15%
I Series	October 22, 2018	— ⁽¹⁾	— ⁽¹⁾
N Series	October 28, 2019	— ⁽¹⁾	— ⁽¹⁾
QF Series	October 28, 2019	1.05%	0.20%
QFW Series	October 28, 2019	0.85%	0.15%
Series R	September 9, 2020	n/a	n/a
Series S	May 21, 2019	— ⁽²⁾	0.02%
W Series	October 22, 2018	1.35%	0.15%

(1) This fee is negotiable and payable directly to CLIML by investors in this series through redemptions of their securities.

(2) This fee is negotiable and payable directly to CLIML by investors in this series.

(3) Prior to July 22, 2022, the management fee for F Series was charged to the Fund at a rate of 1.05%.

(4) The series' original start date was August 7, 2018. All securities in the series were redesignated as F Series on September 16, 2022.